

ESTATE AUCTION

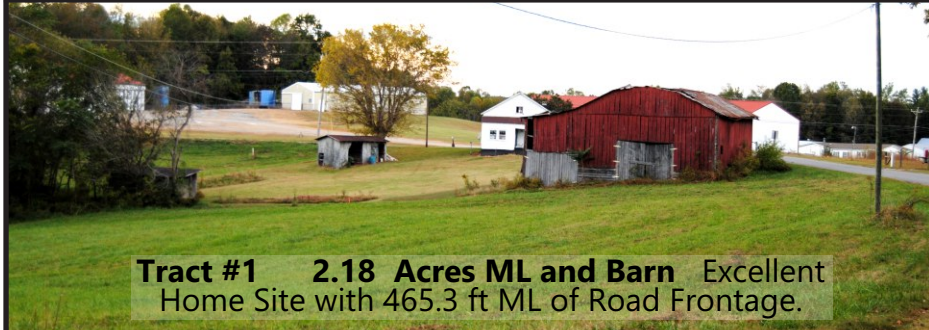
SATURDAY OCT 28th 2017 10:00 A.M. Central

Sale Site Location: From the Square in Albany, Ky take Hwy. 127 (Tennessee Road South) South, then turn South on Hwy. 738 Wolf River Dock Road, and travel 3.7 miles ML then turn South on Butler Ridge Road. Address 178 Butler Ridge Road. Watch for Auction Signs!

Selling for the Bette J. Wilson Estate



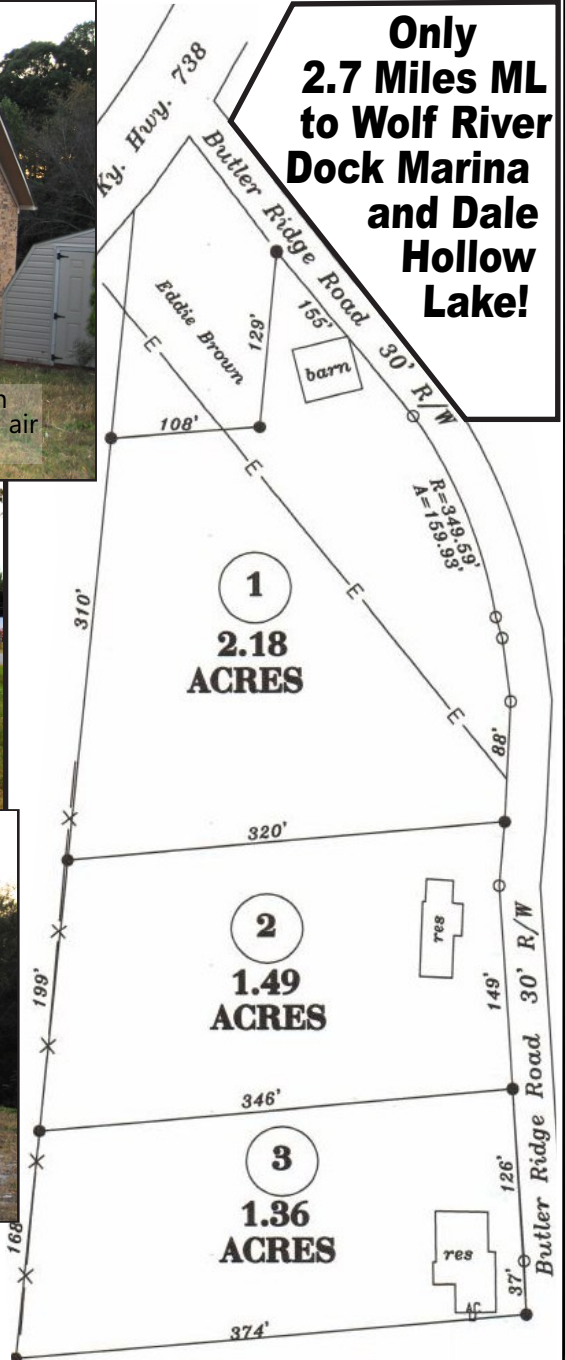
Tract #3 Home and 1.36 Acres ML Three bedroom home with combination kitchen and dining room, living room, den, 1 1/2 bath, central air with propane heat, 2 car garage, large back deck, and storage building.



Tract #1 2.18 Acres ML and Barn Excellent Home Site with 465.3 ft ML of Road Frontage.



Tract #2 Home and 1.49 Acres ML Three bedroom home with combination kitchen and dining room, living room, bath, central heat and air, and carport.



Only 2.7 Miles ML to Wolf River Dock Marina and Dale Hollow Lake!

Personal Property: 5 p. bedroom suite, 4 p. bedroom suite, oak end table, Victorian style (couch, love seat, chair), couch, bedding, rugs, lamps, pictures, misc figurines, misc glassware, treadmill, curio cabinets, book shelves, cookbooks, misc books, encyclopedias, games, dolls, laundry basket, angels, music box, cabinets, slice-O-matic, cast iron cornbread skillet, Hometics foot spa, step stool, misc rooster decor, glass roosters, tater and onion box, Tappan microwave, coffee table, misc. pots and pans, floor model tv, pedestal fan, and chair, small desk, desk chair, Proton computer monitor, basket, grand poppy fryer, Presto electric skillet, continental electric blender, Miracle Gro products, Husky 18 hp 42 in. cut riding mower, Murray push mower, planter stands, misc. cookware, Sunoco Presidential Coin Series 1950-2000, trash can, ouch, 2 chairs, Dirt Devil Swift Stick, Home Interior glass figurines, bench, map picture of Kentucky, bench, rocker, shepherd rod, ironing board, Royal Princess Doll, quilt rack, yarn, ceiling light fixture, plastic stackable shelving, wreath, folding stool, broom, Statesman seed spreader, Kentzoom Lock holder, oil lamp, planing pots, misc tool boxes, 3p. locker set, cricket catcher, fishing net, minnow bucket, tackle box, magnifying glass, 16 gal shop vac, 8 tracts, Craftsman toolbox with wrenches, gas fireplace, box of filters, valances, curtains, pasta machine, White Differential Sewing Machine, ice cream maker, cake pans, Christmas wrapping paper, Singer Sewing machine, Kirby classic vacuum, bottle jack, misc cookware, chair cushions, misc porcelain dolls, shoe rack, vintage type life jackets, and other items to numerous to mention.



REAL ESTATE TERMS: 15% Down Day of Sale, Balance to be delivered on or before December 12th 2017. Possession with Deed.
PERSONAL PROPERTY TERMS: 10% Buyers Premium. Cash or Good Check.

All information herein was obtained from sources believed to be reliable; however, accuracy is not guaranteed. Prior to bidding, prospective purchasers are invited to inspect to their satisfaction any and all properties being offered in this auction. All properties selling "as is", "where is" both surface and subsurface. Property is sold subject to any right of ways or easements recorded or unrecorded. All announcements made day of sale take precedence over all prior advertising. Home was built before 1978 and may or may not contain lead based paint. Potential Buyers shall have 10 days prior to date of auction to inspect home. Buyer will be required will be required to sign a lead based paint waiver form.

7% Buyers Premium will be added to the Winning Bid of Real Estate to Determine the Sales Price
10% Buyers Premium will be added to the Winning Bid of Personal Property to Determine the Sales Price

NEAL REALTY AND AUCTION

520 Tn. Rd. Albany, Ky 42602 Phone: (606) 387-7167

Donald R Neal, CAI, CES, GPPA Auctioneer
 Lyndon Parmley Sale Associate
 Mark Neal, CAI Sale Associate
 Geneva Neal, Broker
 Randy Claborn, Auctioneer
 Sarah Neal, Sales Associate



"FOR A REAL DEAL, SEE COL. NEAL"

