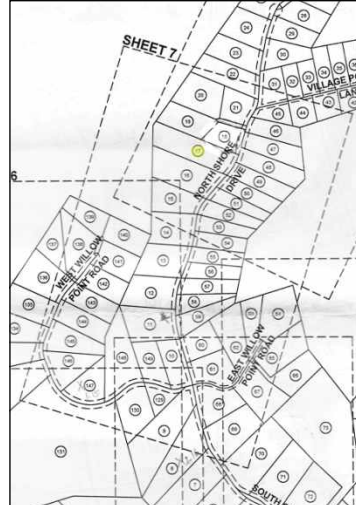


FOR SALE

WWW.NEALREALTYANDAUCION.COM

WWW.NEALREALTYANDAUCION.COM



Lot #17 of the Cumberland Shores Subdivision

This lot is located in the gated Cumberland Shores Subdivision of Wayne County and joins the CORPS of Engineers. Property is located 9.5 miles ML from Beaver Creek Resort.

Price \$26,900



NEAL REALTY AND AUCTION

520 Tn. Rd. Albany, Ky 42602

Phone: (606) 387-7167

Donald R Neal, CAI, CES, GPPA
Auctioneer

Lyndon Parmley
Sale Associate
Auctioneer

LICENSED IN KY AND TN
TN AUCTION FIRM LIC. No. 2197
TN INDIVIDUAL AUCTION FIRM LIC. No. 795

Mark Neal, CAI
Sale Associate
Auctioneer

Geneva Neal, Broker
Randy Claborn, Auctioneer
Sarah Neal, Sales Associate



"FOR A REAL DEAL, SEE COL. NEAL"

